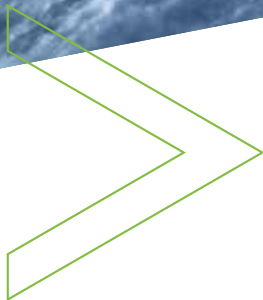




**KRATON™**

SUSTAINABLE SOLUTIONS.  
ENDLESS INNOVATION.™



**SYLVATRAXX™**

**TREAD PERFORMANCE ADDITIVES**



## Pushing Boundaries to Enable Safer Driving Experiences.

With millions of drivers on the road worldwide, reliable tires are critical to ensuring safety and performance, especially during inclement weather conditions. Producing high-quality tires that meet these requirements is challenging.

Kraton's long history of helping manufacturers push the boundaries of innovation has enabled safer driving experiences. Kraton has been serving the rubber and tire industry for more than 65 years with renewable and sustainable products.

Since the first tire-related innovation registered more than 20 years ago, we have continuously worked with leading tire producers to develop SYLVATRAXX™ Tread Enhancement Additives (TEA™) to enable best-in-class tire performance.

Kraton TEA™ Technology focuses on improving the tire's tread performance balance, including wet grip, rolling, and winter.

**65**  
YEARS  
TIRE & RUBBER  
INDUSTRY

**20+**  
YEARS  
TEA™ TECHNOLOGY  
INNOVATIONS

**11+**  
YEARS  
SYLVATRAXX

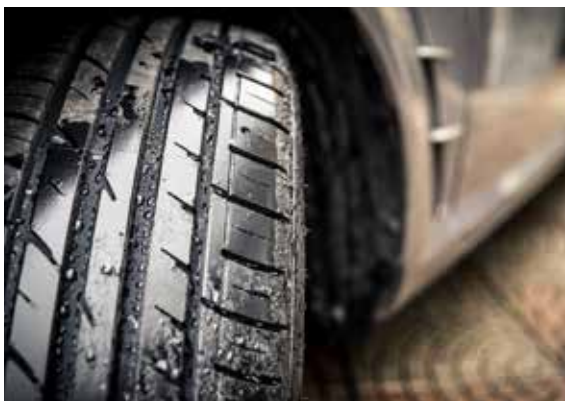
**80+**  
YEARS  
PINE CHEMICAL  
REFINING

## Performance Designed to Meet the Demanding Needs for Tires

SYLVATRAXX offers a unique portfolio of natural, synthetic, and hybrid products based on a foundation of renewable internal raw material building blocks augmented by external raw materials. These products are designed to provide excellent performance in tire applications.

Kraton's tread enhancement additives are designed to influence the performance of the rubber compound in the final tire application and have a strong positive impact on wet traction. Kraton focuses on achieving the optimal performance balance between wet traction improvement, rolling resistance, and wear resistance.

Process enhancement additives are formulated to support more effective processing of modern tire compounds containing state-of-the-art silanes with high silica loadings and the latest rubber polymers.



# Sustainability is a Driver

With more than 70% of companies today now having some form of governance on sustainability in place, Kraton understands many of the key elements our customers face. We are dedicated to finding ways to help our customers achieve their sustainability initiatives with our industry-leading solutions that bring exceptional value.

## COLLABORATION. IT'S CREATING SUSTAINABLE FUTURES

Life Cycle Assessment (LCA) provides opportunities to collaborate more closely with suppliers, supply chain partners, and customers around their products. In particular, it enables our customers to identify ways to decrease carbon footprint through the use of our raw materials. These advantages provide high-performance value while helping customers reduce environmental impact in their supply chains, manufacturing processes, and end-use product cycle.

## MAKING THE CIRCULAR & BIO ECONOMY GO ROUND

Kraton's collaborations are making it possible to create materials of high enough quality for food packaging by breaking down complex, low-quality waste plastics to their original state. This way, we can reduce, reuse and recycle more of our resources without needing new ones, making the circular economy a reality.

We have obtained biobased certifications for many of our chemical products as part of our commitment. These products are certified under the European biobased content certification scheme (based on the European standard EN 16785-1:2015) and USDA BioPreferred® Program. Kraton intends to transition all biobased certifications to the USDA BioPreferred® Program as we advance.

## REGULATORY CHANGES ARE A DRIVER FOR THE FUTURE

Regulation plays an important role in securing a clean and healthy environment; as a result, tighter regulatory requirements globally are being implemented.

## CAPACITY TO GROW

Through our sustainable procurement initiatives and best business practices, we enhance the security of our supply chain, transportation, and logistics systems.

Kraton's commitment to sustainability has earned us a Platinum Rating from EcoVadis. This rating recognizes our company-wide sustainability efforts, which enable us to help meet market demands, advance the bioeconomy, and promote a more sustainable future through collaboration in the value chain.





---

## Research & Development

Kraton offers dedicated tire-industry additive synthesis, rubber compounding, and tread performance analysis capabilities to serve tire customers with the product line and applications development support. Customer-focused teams cooperate with tire manufacturers to select or develop products and find the optimal performance balance using applications studies.

Kraton's R&D Team brings experience from tires, fillers, rubber polymers, coupling agents, tackifiers, resins, process aids, customer compounding, and specialty additives.



# KRATON™

**SUSTAINABLE SOLUTIONS.  
ENDLESS INNOVATION.™**

## **KRATON CORPORATION**

For more information, visit our website at [www.kraton.com](http://www.kraton.com).

**U.S.A. Headquarters**  
Houston, Texas

**Asia Pacific**  
Shanghai, China

**Europe, Africa, Middle East**  
Almere, The Netherlands

**India/Southeast Asia**  
Mumbai, India



The information herein is for general information purposes only. While it is believed to be reliable, but no representations, guarantees or warranties of any kind are made as to its completeness, accuracy, reliability, or suitability for applications or the results to be obtained therefrom. Kraton disclaims any and all liability for damages or injuries arising from the use of this information. Nothing contained herein is to be considered permission, recommendation, or an inducement to use any Kraton product in any specific application or in conflict with any existing intellectual property rights.

\*KRATON, the Kraton logo, and SYLVATRAXX are either trademarks or registered trademarks of Kraton Corporation, or its subsidiaries or affiliates, in one or more, but not all countries

©2023 Kraton Corporation