



## Kraton D1192 and D0243

### High Quality Emulsions Made Easy Using Kraton Polymers

Kraton D1192 and Kraton D0243 are the most technologically-advanced and user-friendly polymer options for use in the manufacture of pre-modified asphalt emulsions.

#### Enhanced Polymer Comparability

- » Improved compatibility in a wide range of base asphalts
- » Low shear blending option
- » Streamline formulations through a single polymer

#### Lower Modified Asphalt Viscosity

- » Leads to smaller particle size and narrower distribution
- » Allows for emulsification on ambient pressure equipment
- » Potential for improved performance through higher polymer loading

#### Superior Liquid Emulsion Properties

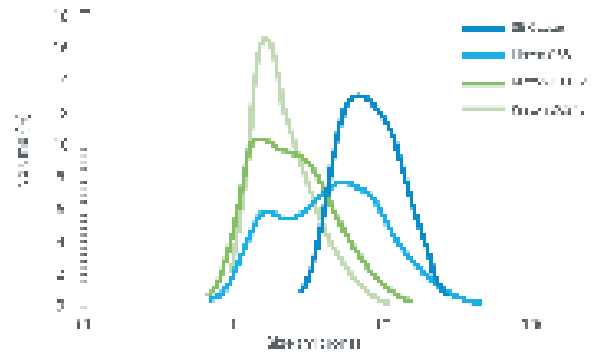
- » Excellent initial and long-term emulsion viscosity and storage stability
- » Improved resistance to shear and pumping processes
- » Optimal balance of break and set properties
- » Can tune emulsion viscosity easily as a function of residue content

#### Improved Emulsion Paving Solutions

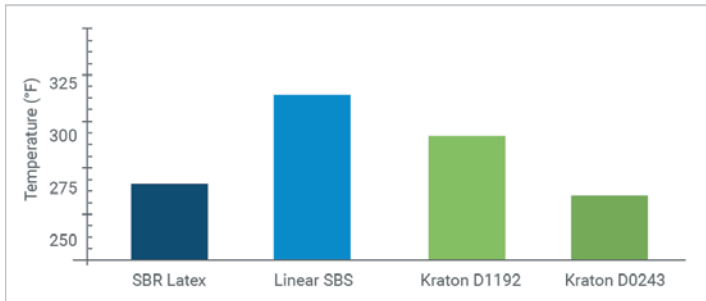
- » Better chip retention
- » Extended pavement system durability



Kraton D1192 and Kraton D0243 are the most technologically-advanced and user-friendly polymer options for manufacturing pre-modified asphalt emulsions. The high vinyl butadiene microstructure in Kraton D1192 and Kraton D0243 allows for production of pre-modified emulsion with small average particle size and narrow distribution.

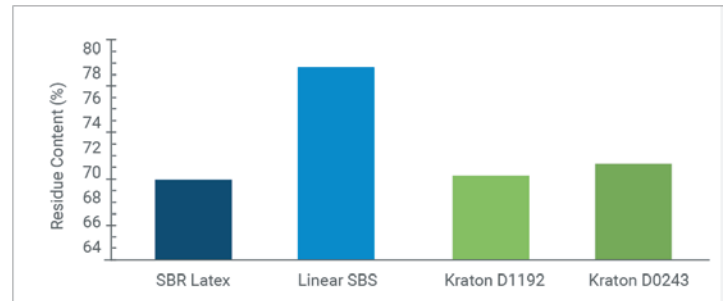


### Asphalt Emulsification Temperature (oF)



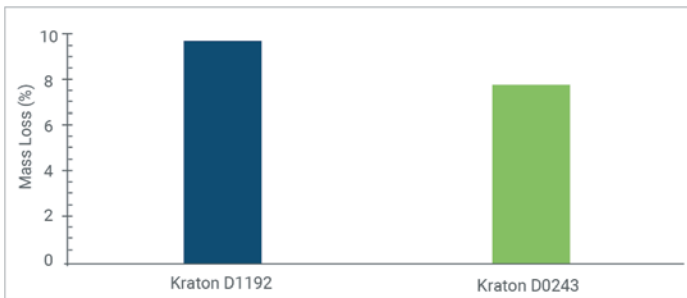
Kraton D1192 and Kraton D0243 pre-modified binders can be emulsified at low temperature.

### Distilled Residue (%) at Target Saybolt Vis. (122oF, sec.)



Kraton D1192 and Kraton D0243-modified CRS-2P emulsions can be produced at low residue content.

### ASTM D7000 Sweep Test Mass Loss (%) - 35oC Cure for 2 Hours



Kraton D1192 and Kraton D0243-modified CRS-2P emulsions exhibit excellent early strength development. Penetration of each distilled residue was 116 dmm and 106 dmm, respectively.



Figure 2 - Kraton D1192-Modified CRS-2P Emulsion Sweep Test Pad - Post-Sweep

## KRATON CORPORATION

For more information, visit our website at [www.kraton.com](http://www.kraton.com) or email [info@kraton.com](mailto:info@kraton.com).

**U.S.A. Headquarters**  
Houston, Texas

**Asia Pacific**  
Shanghai, China

**Europe, Middle East, Africa**  
Almere, The Netherlands

**India/South East Asia**  
Mumbai, India



## DISCLAIMER

The information herein is for general information purposes only. While it is believed to be reliable, no representations, guarantees or warranties of any kind are made as to its completeness, accuracy, reliability, or suitability for applications or the results to be obtained therefrom. Kraton disclaims any and all liability for damages or injuries arising from the use of this information. Nothing contained herein is to be considered permission, recommendation, or an inducement to use any Kraton product in any specific application or in conflict with any existing intellectual property rights.

\*Kraton and the tagline "Sustainable Solutions. Endless Innovation." are trademarks of Kraton Corporation or its affiliates.